

# Public Document Pack

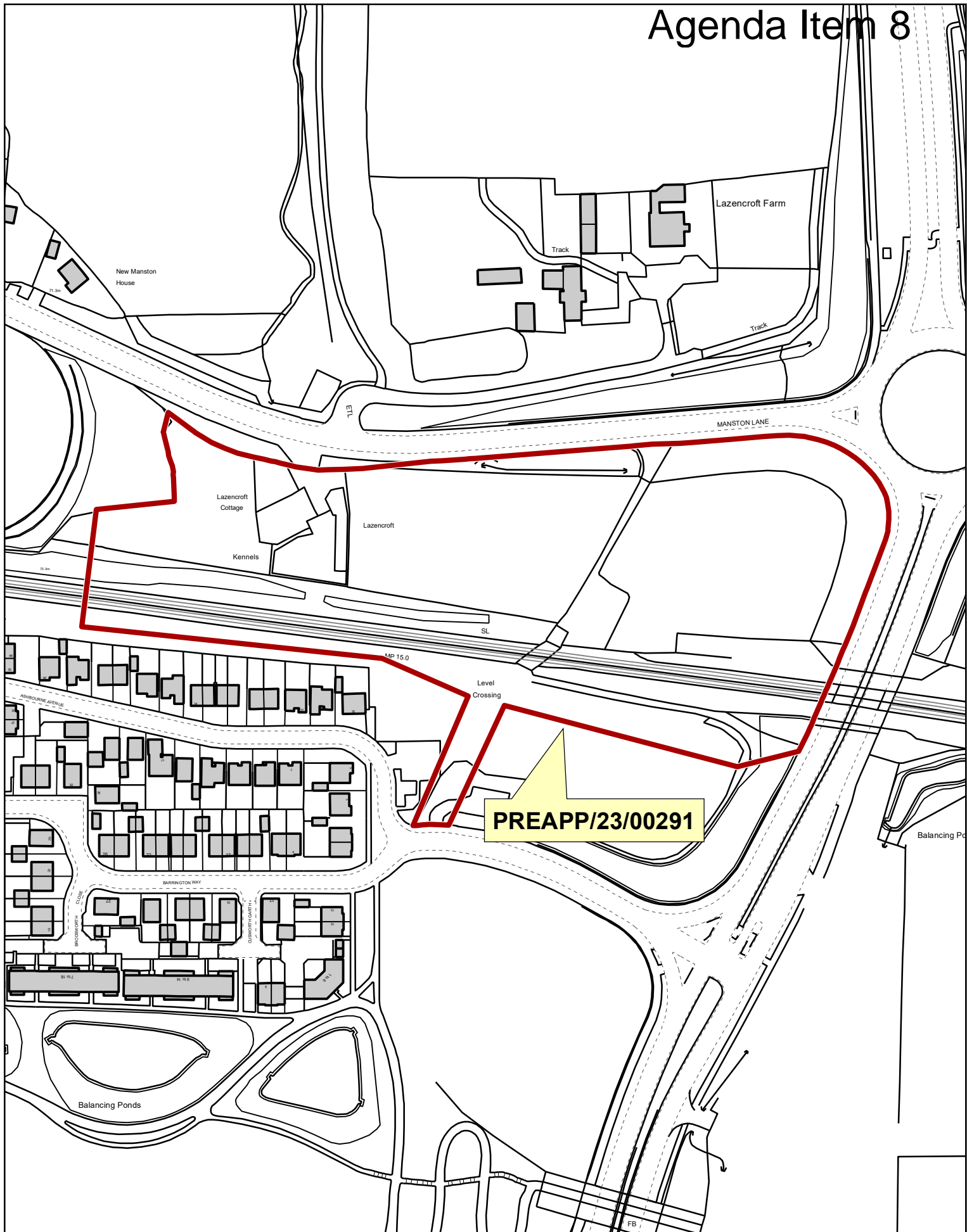
## SUPPLEMENTARY INFORMATION

NORTH AND EAST PLANS PANEL – 21<sup>ST</sup> NOVEMBER 2024

AGENDA ITEM 8 - PREAPP/23/00291 - Formation of new railway station, car parking, pedestrian access and associated works at land south of Manston Lane, Thorpe Park, LS15

AGENDA ITEM 10 - 24/04058/FU – Variation of condition 2 (approved plans) of previous approval 23/01597/FU (One new detached dwelling with detached garage to front and garden shed to side/rear; landscaping and pond to rear) to allow for creation of basement and rooms in roof space (including two additional bedrooms) with external alterations including rooflights and new lower ground floor doors to rear and lightwell to side; alterations to rear terrace, steps and external landscaping; relocation of shed to other side/rear at Old Parsonage, Main Street, East Keswick, Leeds, LS17 9EU.

This page is intentionally left blank



# NORTH AND EAST PLANS PANEL



This page is intentionally left blank



The Site

Page 5

© Crown copyright and database rights 2024 Ordnance Survey AC0000815564 - © Bluesky International Ltd and Getmapping Plc [2024]

# PLANS PANEL PRESENTATION

SCALE 1:2000



This page is intentionally left blank





**PLANS PANEL PRESENTATION**

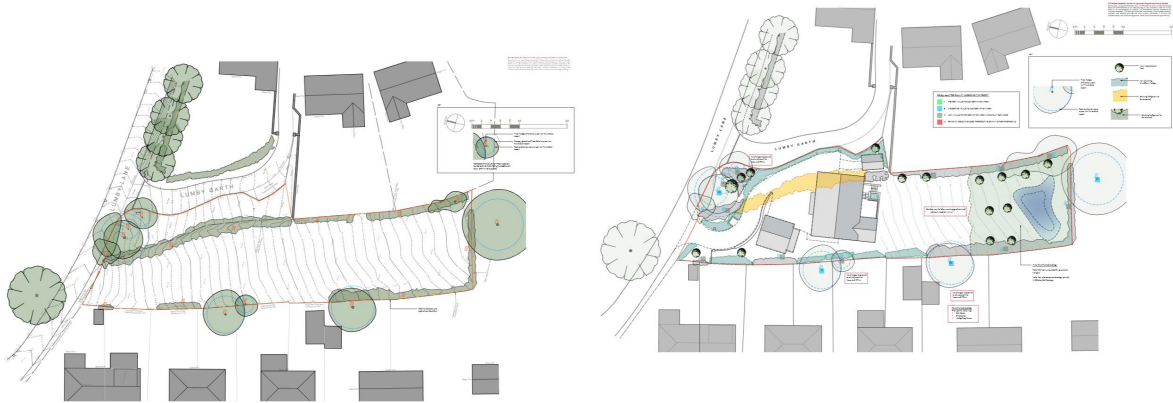
SCALE 1:2500



This page is intentionally left blank



□23/01597/FU permission



This page is intentionally left blank